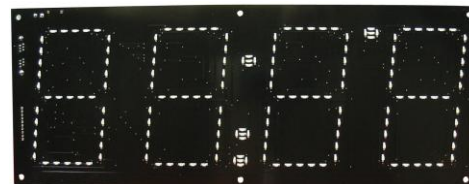


<http://www.EmbeddedDataSystems.com>

FEATURES

- Four, 4 inch tall characters with decimal point, colon and Deg. Mark.
- Very bright, Visible in direct sunlight.
- Low profile, less than 1inch thick.
- Low Mass design for easy wall mounting.
- Unique 64 bit electronic serial number.
- Digital Data, CRC16 error checking on all I/O.
- Built-in multidrop controller.
- Uses 1-Wire Communication Protocol.
- Supported By OneSix DDE Server.
- 1000+ Feet from Host in network of up to 100 devices.



DESCRIPTION

This DSP7x4 is designed to provide real time parameter display or numeric information in a 1-Wire network. The DSP7x4 provides four, 4-inch digits, a decimal point, a colon and a degree mark. The display background is flat black for high contrast and the LEDs are among the brightest available. This combination results in a super clear display at distances of up to 50 feet. At distances of up to 20 feet the DSP7x4 is visible in direct sunlight. Multiple units can be cascaded to produce seamless numeric displays of variable length.

The DSP7x4 may be placed up to 1000+ feet from the host in a network of up to 100 1-Wire devices. In addition all I/O and data communications are CRC16 error checked for accuracy. The DSP7x4 has a built-in multidrop controller which provides a unique 64 bit registration number (8-bit family code + 48 bit serial number + 8 bit CRC) assuring error-free selection and absolute identity; no two parts are alike. Unique addressing allows sensor function to be identified absolutely.

The DSP7x4 requires a 1-Wire host interface or adapter such as the EDS HA2, HA3, HA4, HA5, HA7E, HA7Net, and HA7S; or Dallas Semiconductor DS9490R, DS9097U, DS9097E.

Because OneSix DDE Server directly supports all EDS 1-Wire products and handles all the communications with the DSP7x4 display, you DO NOT have to be a programmer to use this product. Any Windows application that can use DDE can talk to the DSP7x4 4-character LED display. Examples of such applications include Microsoft Office products like Word & Excel, Wonderware Intouch, National Instruments LabView & LookOut, Capital Equipment Corp. TestPoint, and if you are a programmer development applications like Microsoft Visual Basic and Borland Delphi.

PARAMETER	MIN	TYP	MAX	UNITS
Operating voltage.	11	12	12.5	Volts
Powered operating current (idle, all LEDs off)	60	80	120	MicroAmp
Operating current (all LEDs on)		400		MilliAmp
1-Wire bus load	3	5	7	MicroAmp.
Display thickness		1		Inch
Digit height		4		Inch
Operating Temperature Range	-20	-	70	Deg. C

1-Wire® is a registered trademark of Maxim. OneSix™ is a trademark of Point Six, Inc. Microsoft®, Word®, Excel®, and Visual Basic® are registered trademarks of Microsoft Corporation. Wonderware® and InTouch are registered trademarks of Invensys Systems, Inc. LabView® and LookOut® are registered trademarks of National Instruments Corporation. TestPoint® is a registered trademark of Capital Equipment Corporation. Borland® is a registered trademark of Borland Software Corporation. Delphi is a trademark of Borland Software Corporation.